

# DUVAL MESSIEN

## Lightning control

A know how famous since more than one century



THE INDISPENSABLES



Certified ISO 9001

QUALIFOUDRE

MASE

QUALIFELEC

April 2019

## FOREWORD

Since 1835, our company builds its image with its quality products and services.

With more than one century of experience in the fields of lightning protection and earthing systems, Duval Messien offers a global solution from study to supply an installation of the protection system.

Duval Messien, it is :

- a staff of engineers and technicians trained regularly on standard evolutions,
- a technological advance product always more elaborated and efficient
- a Quality Safety policy still improving with the ASN authorization to remove, dismantle and pack in radioactive lightning conductor's barrels.



## AIR TERMINALS

### LIGHTNING CONDUCTOR WITH SIMPLE ROD

DESIGNATION :	REFERENCE
Stainless steel passive simple rod diam. 20mm X 500MM	TIGSIN500
Stainless steel passive simple rod diam. 20mm X 1000MM	TIGSIN1000
Stainless steel passive simple rod diam. 20mm X 2000MM	TIGSIN2000

### STRIKE POINT FOR MESHED CAGE

DESIGNATION :	REFERENCE
Stainless steel strike point diam. 18MM X 500MM	PCI500

### EARLY STREAMER EMISSION SYSTEM

DESIGNATION :	REFERENCE
Stainless steel SATELIT <sup>®</sup> 3-25 lightning conductor (can be tested)	PDASAT3N-25E
Stainless steel SATELIT <sup>®</sup> 3-45 lightning conductor (can be tested)	PDASAT3N-45E
Stainless steel SATELIT <sup>®</sup> 3-60 lightning conductor (can be tested)	PDASAT3N-60E
Stainless steel SATELIT <sup>®</sup> +G2 1000 lightning conductor	PDASAT+G2-1000
Stainless steel SATELIT <sup>®</sup> +G2 2500 lightning conductor	PDASAT+G2-2500
Stainless steel SATELIT <sup>®</sup> +G2 4500 lightning conductor	PDASAT+G2-4500
Stainless steel SATELIT <sup>®</sup> +G2 6000 lightning conductor	PDASAT+G2-6000

This excitation device integrated in the air terminal is designed to increase the excitation distance and thus generate the ascending tracer earlier (regarding to an ascending tracer naturally emitted by a simple rod).

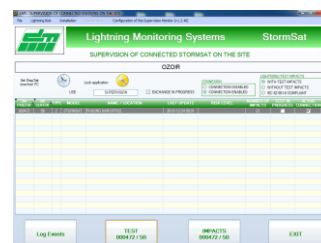
All of our early streamer emission systems are tested in compliance with NF C 17-102 standard, edition September 2011.



## AIR TERMINALS

### LIGHTNING PROTECTION STATIONS

DESIGNATION :	REFERENCE
Stormsat <sup>®</sup> 25 Lightning protection station	STORMSAT-25E
Stormsat <sup>®</sup> 45 Lightning protection station	STORMSAT-45E
Stormsat <sup>®</sup> 60 Lightning protection station	STORMSAT-60E



### CONTROL TOOLS FOR ESE & CENTRALES

DESIGNATION :	REFERENCE
Wired tester for G2 lightning conductor	TESTERSAT+G2
Remote tester at distance for one SAT3 lightning conductor	TESTS3N
Multitester Pack at distance for SAT3 lightning conductor	TESTSMULTIS3N
Test perch for SAT3 / G2 lightning conductor	TESTPERCAB
Diag Sat <sup>®</sup> for StormSat <sup>®</sup> lightning protection station	DIAGSAT

## AIR TERMINALS FIXINGS

DESIGNATION :	REFERENCE
SATELIT <sup>®</sup> +G2 clamping / MAST diam.34 mm	MANG2-16/34
SATELIT+G2 adaptation clamping on church cross	MANADAPT
Plate support for simple rod	PLATIGISIM
Plate for strike point in stainless steel	PLAPOICHOC
Stainless steel connection collar conductor to passive simple rod diam. 20MM	RACONPTE
Connection collar conductor to lightning conductor	PDA2RAC
Rubber water deflecting cone	CONECAOUT
Zinc water deflecting cone	CONEZINC



## ACCESSORIES FOR AIR TERMINALS

### TUBULAR MASTS

DESIGNATION :	REFERENCE
Threaded stainless steel nesting mast 2M* 1 x Ø34	MAT342NIF
Stainless steel nesting masts 4m 2x2M** 2 x Ø34	MIEMB4S3N
Stainless steel nesting masts 6m 3x2M** 2x Ø34 / 1 x Ø42	MIEMB6S3N
Stainless steel masts 8m (4 x 2M)***	MIEMB8S3N

\*Direct fixing with SAT3 / Add coupling MANG2-16/34 with SATELIT+G2

\*\*2 fixings are necessary for a lightning rod on a mast from 2 to 4m

3 fixings are necessary for a lightning rod on a mast from 5 to 6m

\*\*Guying kit is necessary





## ACCESSORIES FOR AIR TERMINALS

MASTS FIXINGS DESIGNATION :	REFERENCE
Vertical bolting bracket - offset 200MM	ATTVMAT200
Vertical bolting bracket - offset 300MM	ATTVMAT300
Mural fixing for mast - offset 200MM	FIXMATD200
Mural fixing for mast - offset 400 MM	FIXMATD400
Mural fixing for mast -offset 500 MM	FIXMATD500
Tie-down strapping chimney (set of 2) with 5M strip	CERCLCHEM
Horizontal plate for mast (Diam. 34mm)	PLATMAT34
Horizontal plate for mast (Diam. 42mm)	PLATMAT42
Offset collar in X	COLLRMATX
Offset collar in cross X	COLLRMATC
Guying kit - 3 points for mast (Diam. 42mm max)	HAUBKIT3P
Guying kit - 4 points for mast (Diam. 42mm max)	HAUBKIT4P
Three feet saddle with ballast for mast (Diam. 50mm max)	TREPIED
Additional ballast for three feet saddle	DMDALETTE



### CONDUCTOR FIXINGS ON MATS

DESIGNATION :	REFERENCE
Clamping collar – Stainless steel - Length 360mm	COLSER360
Clamping collar – Stainless steel - Length 520mm	COLSER520
Clamping collar – Stainless steel - Length 838mm	COLSER838



## CONDUCTORS

### CABLES AND TAPES

DESIGNATION :	REFERENCE
Flexible cable green/yellow HO7 VK 50 <sup>2</sup> X1 (per meter)	HO7VK50V/J
Flexible cable green/yellow HO7 VK 95 <sup>2</sup> X1 (per meter)	HO7VK95V/J
Bare copper cable 25mm <sup>2</sup> (Reel of 50M)	CABLETTE25
Bare copper cable 50mm <sup>2</sup> (Reel of 50M)	CABLETTE50
Aluminum tape 30X3MM (per meter)	RUBALU303
304L stainless steel 30X2MM (per meter)	RUBINX302
Tin-plated copper tape 30X2MM (per meter)	RUBCUE302
Preformed elbow of tin-plated copper tape (30X2MM)	COURUBCUE



### BRAIDS AND SHUNTS

DESIGNATION :	REFERENCE
Tin-plated copper flat braid 50MM <sup>2</sup> (per meter)*	TREPLET50
Tin-plated copper flat braid shunt 50MM <sup>2</sup> - Length 200MM	STE50/200
Tin-plated copper flat braid shunt 50MM <sup>2</sup> - Length 500MM *	STE50/500



\* Other dimensions and sections upon request



## CONDUCTORS

### FLAT CONDUCTORS FIXINGS (WIDTH 30MM)

DESIGNATION :	REFERENCE
Tin-plated fixing with U-shape for tile or slate roof	ATTARDOIS
Isolating fixing – Offset 20MM	ATTISOPLAT
Nylon plug	CHEVNYL
Galvanized steel plug	CRAMPGALV
Stainless steel plug	CRAMPINOX
Stainless steel clip	CLIPINOX
Watertightness washers 14X2X8MM RUBBER/ALU diam.	RONDVULC
Aluminum pop rivet	RIVPOPALU
Copper pop rivet	RIVPOPCU
Stainless steel pop rivet	RIVPOPINO
Screw fixing	FIXAVIS
Heat cementing fixing	PAT THERMO
Cement + PVC conductor support studs	PLOCIMATTA
Tin-plated copper deck plate	PONTCUE
Flat/round stainless-steel coupling	RACPLTRND
Flat/flat stainless-steel coupling with M10 screw	RACPRVIS
Cable brass dip	SERBARLAI



## ACCESSORIES FOR AIR TERMINALS

### MISCELLANEOUS

DESIGNATION :	REFERENCE
Lightning counter	COMPTCCF03
Lightning counter with time report system	COMPTEURH
TV antenna surge diverter	ECLATEUR
2M galvanized steel protective tube with 3 fixings	GAIPROPAR2
2M stainless steel protective tube with 3 fixings	GAIPROTINO
Control Junction	JOINTCONTRI



## PREVENTION

### STORM DETECTION

DESIGNATION :	REFERENCE
STORMDETEC™ storm detector	STORMDETEC
Moving STORMDETEC™ for event*	STORMMOBILE

\* To rent for your events outside



## EARTHING SYSTEMS

### EARTH RODS

DESIGNATION :	REFERENCE
Copper steel rods (Diam. 17mm) - Length 1M	PIQACUA1M
Stainless steel rods (Diam. 16mm) - Length 1M	PIQINOX1M
Special steel strike for earth rods	POINTEACSP

### ACCESSORIES FOR EARTH RODS

DESIGNATION :	REFERENCE
Stainless steel earth rod to tape clamp M10X47MM	GOUJONIN10
Steel or stainless-steel clamp guide	GUIDGOUJON
Head for clamp guide – Earth rods knocking in	GUIDTETFRA
Rod/Screw tape connector	CONPIQRUB2

### EARTHING GRIDS

DESIGNATION :	REFERENCE
Copper earthing grid 1X1M – Meshes 115X30X30MM	GRILTER1/1
Copper earthing grid 2X1M – Meshes 115X30X30MM	GRILTER2/1

### INSPECTION PITS

DESIGNATION :	REFERENCE
Square cast-iron inspection pit 300X300MM	REGCAFIFTE
Cast iron inspection pit 230MM	REGFTED230
Concrete riser 40 x 40 x 40 cm with lid	REHAUSBET
Concrete riser 26 x 26 x 28,6 cm	REHAUSSEB

### ACCESSORIES

DESIGNATION :	REFERENCE
Equipotential connection marker (TF/TE)	PLAQLEQUI
Triangle marker Storm 3 x 200	PLAQDMTER0R2
Ground coil HF	SELFTERRE
Copper equipotentiality bar with 2 isolating piece 50X5MM – Length 100MM	BAREQUI100
Copper equipotentiality bar with 2 isolating piece 50X5MM – Length 150MM	BAREQUI150
Copper aluminum bimetal plate 100X100MM	PLAQAL/CU
Black cold bitumen EF 2/4MM - 25 KG bucket	BITUMENOIR

### GROUND TESTER

DESIGNATION :	REFERENCE
Ground tester Pack	MDM20K

### GROUND IMPROVING

DESIGNATION :	REFERENCE
TEREC+ (in bag of 10 KG)	TEREC+SAC
TEREC+ (bucket of 20 KG)	TEREC20



## EARTHING SYSTEMS

### EXOTHERMIC WELDINGS – ARGOSWELD RANGE

DESIGNATION :	REFERENCE
ARGOSWELD #45* welding powder	ARG0045MA
Right graphite mold CC1 35 mm <sup>2</sup> x 35 mm <sup>2</sup> **	ARGCC143535
Vertical right graphite mold BB1 25x3mm**	ARGBB14253
Graphite mold BR1 30x2mm x earth rod 14.2 mm**	ARGBR14142302
Handle clamp for welding mold***	ARG60101

\*Conditioning in tube or bag (from #45 to #400)

\*\*Complete range of molds according to type of connections



Bar & Bar					Bar & earth rod			Bar & cable	
BB1	BB3	BB7	BB14	BB41	BR1	BR2	CB1	CB4	CB5
Cable & cable					Cable and earth rod			Bar & steel	
CC1	CC2	CC4	CC7	CC14	CR1	CR2	CR3	BS1	BS2
Cable and rebar					Cable and steel surface				
CRE1	CRE2	CRE3	CRE6	CRE17	CS1	CS2	CS3	CS7	CS8
Cable and stainless steel									
CS9	CS25	CS27							

## SURGE PROTECTIVE DEVICES

### LOW VOLTAGE SPD Class/ Class 2 with integrated fuses

DESIGNATION :	REFERENCE
Single phase + fuse for TT & TN (240V)	PH2801615
Three phases + fuse for TT & TN (240V)	PH2905871
Single phase + fuse for IT (400V)	PH2907259
Three phases + fuse for IT (400V)	PH2907260



### LOW VOLTAGE SPD Class 2 for IT

DESIGNATION :	REFERENCE
Two phases for IT	PH2805321
Three phases for ITSN	PH2909968
Three phases + N for ITAN	PH2906484

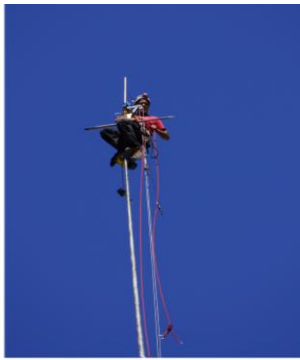
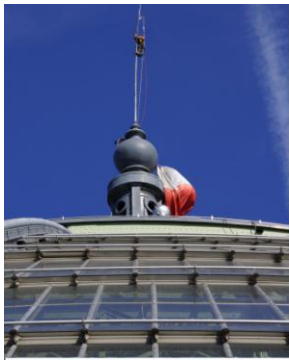


### LOW VOLTAGE SPD Class 2 for TT and TN

DESIGNATION :	REFERENCE
Single phase for TT and TN	PH2905333
Three phases for TN	PH2905339
Three phases+ N for TT and TN	PH2905340







## Some France references

### Atomic Energy Commission

- Fontenay aux Roses (92)
- Saclay (91) Bruyère le Chatel (91)
- Marcoule (30)

### Army, Air Force, Navy

- BA113 (St Dizier)
- Amunitions depot (Des Touris)
- DCN (Toulon)

### Chemical industry, Refineries

- Sanofi Aventis (Vitry / Seine)
- Kem One (Lavera)
- Total Lubriant (Rouen)
- Petroineos (Fos/mer)
- Geo gaz (Lavera)
- Shell Chimie (Rouen)

### Monuments

- Grand Palais (Paris)
- Palace of Chaillot (Paris)

### EDF

- Aramon thermal power plant

### GDF

- Recompression station
- Storage stations
- Gas terminal
- metal terminal

### Research - Industry

- CNES
- CNET
- SNECMA (Corbeil)
- Aerospace

### Administrations - Transports

- ADP Charles de Gaulle and Orly airports
- Credit Lyonnais
- RATP
- Bank of France
- General Council (Marseille)
- CHU (St Brieuc)

## International references

### Burkina Faso

- National hydrocarbon company

### Ivory Coast

- Abidjan international airport
- France Embassy

### Dubai

- Burj Khalifa

### Gabon

- French Army Base BIMAT

### Guinea

- Guinea Electricity (EDG)
- Guinea Water Company (SEG)

### India

- Taj Hotel
- Kalaikunda Air force

### Indonesia

- PEGGI Cikarang

### Khazakstan

- Oilfields Nuraly

### Iran

- Jiroft's Fruits Markets
- Boroujerd Hospital

### Lebanon

- CMA CGM & Merit Warehouse
- Court Yard Beyrouth

### Malaysia

- Monorail of Malaysia – Phase 1
- Gated Bungalow Saujana Selangor

### Mali

- PEGGI Cikarang

### Morocco

- Cement Plant of Oudja

### Nigeria

- SEPTA (oil site)

### Dominican Republic

- Tower of Kesington
- Altec Dominica
- BHD bank

### Pakistan

- Lahore airport

### Romania

- Biogas tank

### Senegal

- SONATEL head office
- SOCOCIM cement plant

### Serbia

- Izvor hotel

### Sri Lanka

- Asiri Surgical hospital

### Togo

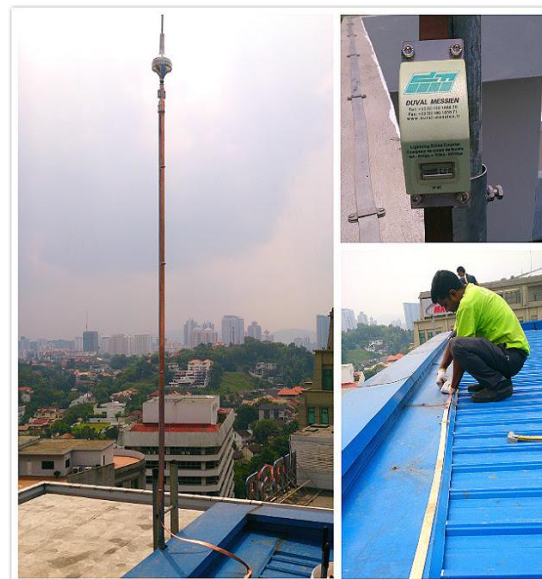
- Togolese warehousing company
- MOOV Togo

### Turkey

- F1 Istanbul Park
- North Black Sea highway tunnels

### Vietnam

- Ben Tanh metro line
- Hydraulic central of Da Mi
- Memorial of Pac-Po



Join us on :

