

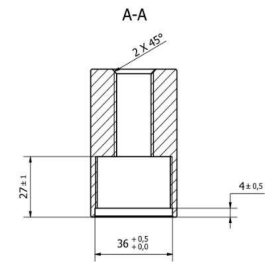
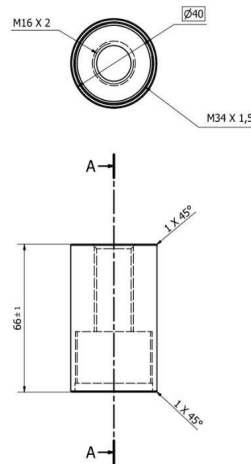


# Lightning products Early Streamer Emission System

## Sleeve for SATELIT + G2

Sleeve for SATELIT+G2 or single rod  $\varnothing$  16 mm / Mat  $\varnothing$  34 mm in stainless steel.

It is threaded on one side to receive a SATELIT+G2 type lightning rod or a single rod lightning rod ( $\varnothing$  1 = 16mm) and on the other to receive the M34 lightning rod support mast.



## Characteristics

|                        |  |
|------------------------|--|
| Reference :            | <b>MANG2-16/34</b>   |
| Material :             | Stainless steel 304 L  |
| Type of installation : | Lightning conductor Satelit + G2   |
| Assembly :             | Assembly by screwing on lightning conductor and on mast $\varnothing$ 34 |
| Use :                  | Fixing the lightning rod to a mast $\varnothing$ 34                      |
| Dimensions :           | $\varnothing$ 40 x 66 mm   |
| Weight :               | 0,420 kg   |
| Standards :            | NF EN 62561-2- NF EN 62305-3   |

Duval Messien® - A full range of lightning and overvoltage protection.

In the continue framework of its products, Duval Messien shall be entitled to modify specifications without notice.