

Lightning technical datasheet

Stainless steel earth rod Ø 16

In compliance with NF EN 62561-2 standard

These earth rods are used for a lightning or electrical earthing system.

They are extensible by elements. Each extremity is threaded M10 which allows to adapt by tightening the connecting screws ref. **GOUJONIN10**. This stud with high mechanical resistance authorizes the driving in with large depth with powerful machines.

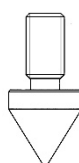
These earth rods should be installed by driving in. It is recommended to use the driving stud ref. **GUIDGOUJON**, to avoid any damage on the earth rod top. This piece is screwed on the connecting screw **GOUJONIN10**.

The first earth rod to install should be equipped with a tip ref. **POINTEACSP**. This tip, in hardened steel, screwed at the end of the 1st earth rod allow the driving in, even with hard grounds.

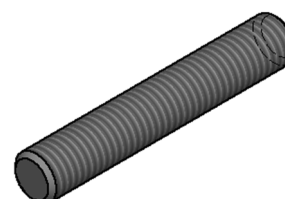
Reference :	PIQINOX1M
Material :	Stainless steel
Type of installation :	Earthing system
Mounting :	Installation by vertical driving in. Extensibility of the electrodes by tightening.
Use :	Lightning or electrical earthing system
Conductors :	Tinned copper tape, stainless and galvanized steel, round conductor
Composition :	1 Earth rod + 1 stainless steel stud + 1 hardened steel tip
Dimensions :	Ø 16 x 1000 mm
Weight :	1,540 kg
Standards :	NF EN 62561-2 - NF EN 62305-3 - NFC 17102



PIQINOX1M



POINTEACSP



GOUJONIN10

Join us on :



Version 2020 - A