

## Lightning technical datasheet

### Stainless steel earth rod $\varnothing$ 16

In compliance with NF EN 62561-2 standard

This earth rod is designed for lightning or electrical earthing system.

Extensible by elements. Each extremity is M10 threaded allowing by clamping a stud ref. **GOUJONIN10**. This stud with high mechanical resistance authorizes the deep sinking with powerful machines.

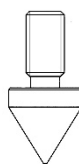
This earth rod should be implemented by sinking. It is recommended to use a driving stud ref. **GUIDGOUJON**, to avoid any damages on the earth rod head. This element is screwed on the stud **GOUJONIN10**.

The first earth rod to install should be equipped with a tip ref. **POINTEACSP**. This tip, in hardened steel, screwed at the end of the 1st earth rod allows the driving in, even with hard grounds.

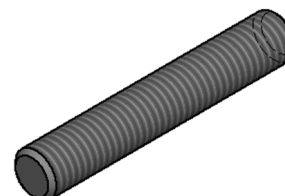
Reference :	<b>PIQINOX1M</b>
Material :	Stainless steel
Type of installation :	Earthing system
Assembly :	Installation by vertical sinking. Earth rods lengthening by screwing.
Use :	Lightning or electrical earthing system
Conductors :	Tin-plated copper tape, stainless steel and galvanized, round conductor
Composition :	1 earth rod + 1 stainless steel stud + 1 hardened steel tip
Dimensions :	$\varnothing$ 16 x 1000 mm
Weight :	1,540 kg
Standards :	NF EN 62561-2 - NF EN 62305-3 - NFC 17102



PIQINOX1M



POINTEACSP



GOUJONIN10

Rejoignez-nous sur :



Version 2020 - A